

Peripheral IV Short & Extended Dwell

Ultrasound Guided Short Peripheral IV Insertion

- Preferred choice for therapy intended to last 5 days or less.
- Nexiva IV catheters are constructed of a closed-catheter system with high flow rates and built in stabilization to increase catheter securement.
- Available in 20 and 22 gauge 1.75 inch, size selection based on vein size after evaluation with ultrasound.
- Power-injectable for CT.
- Clinically proven BD Vialon biomaterial has longer indwell times and softens up to 70% in the vessel, reducing the chance of mechanical phlebitis by up to 50%.

Endurance Extended Dwell Peripheral IV Catheters

- Intended as a bridge between short peripheral and midline length for those with vascular challenges or greater than 5 days but less than 29 days of IV therapy.
- Closed-catheter system with integrated guidewire for challenging placement.
- Ultrasound guidance used for insertion.
- Available in 20 gauge 8 cm length for forearm or upper arm insertion.
- Power injectable for CT.
- Catheter cost is 1/3 of midline cost.
- FDA approved for 29 day dwell.

Midline

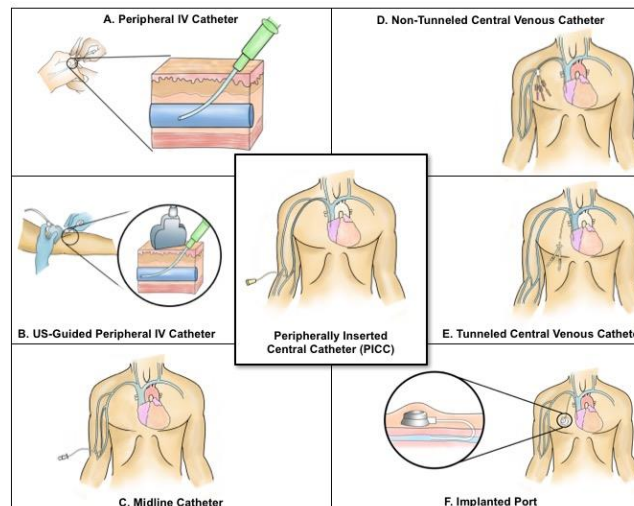
Arrow Midline with Chloragard Technology

- Intended for IV therapy from 1- 4 weeks in duration.
- Midline catheter material is impregnated with chlorhexidine gluconate, giving the midline antimicrobial and anti-thrombogenic properties.
- 4.5 french 15cm single-lumen catheters, inserted in the upper arm with terminal tip location at or near the level of the axilla.
- Ultrasound guidance is used for insertion.
- May be useful for blood sampling.
- Power injectable for CT.
- No tip location confirmation required.
- Avoid risks of subclavian stenosis and central line associated blood stream infection that exist with PICC lines.

PICC

Arrow PICC with Chloragard Technology

- Remove only when PICC is no longer needed or if catheter fails. Indeterminate dwell time.
- PICC catheter material is impregnated with chlorhexidine gluconate, giving the PICC antimicrobial and anti-thrombogenic properties.
- 4.5 french 55 cm single-lumen catheters, inserted in the upper arm with terminal tip location in the distal 1/3 of the superior vena cava.
- Ultrasound guidance is used for insertion.
- Reliably useful for blood sampling.
- Power injectable for CT
- Appropriate for use with infusion of any medication, including irritants and vesicants.
- PICC tip confirmation with EKG guidance eliminates need for post procedure x-ray in greater than 80% of patients.



We serve the patient with evidence-based vascular access care, education and ongoing quality assurance measures.